

**UZMAR®**

# **TWIN SCREW TUGBOATS**

**DRAfter 2500/UZM**



# **AWARD**

## **WINING SHIPYARD**

World's Fastest Tugboat Builder,  
An Unmatched Record!



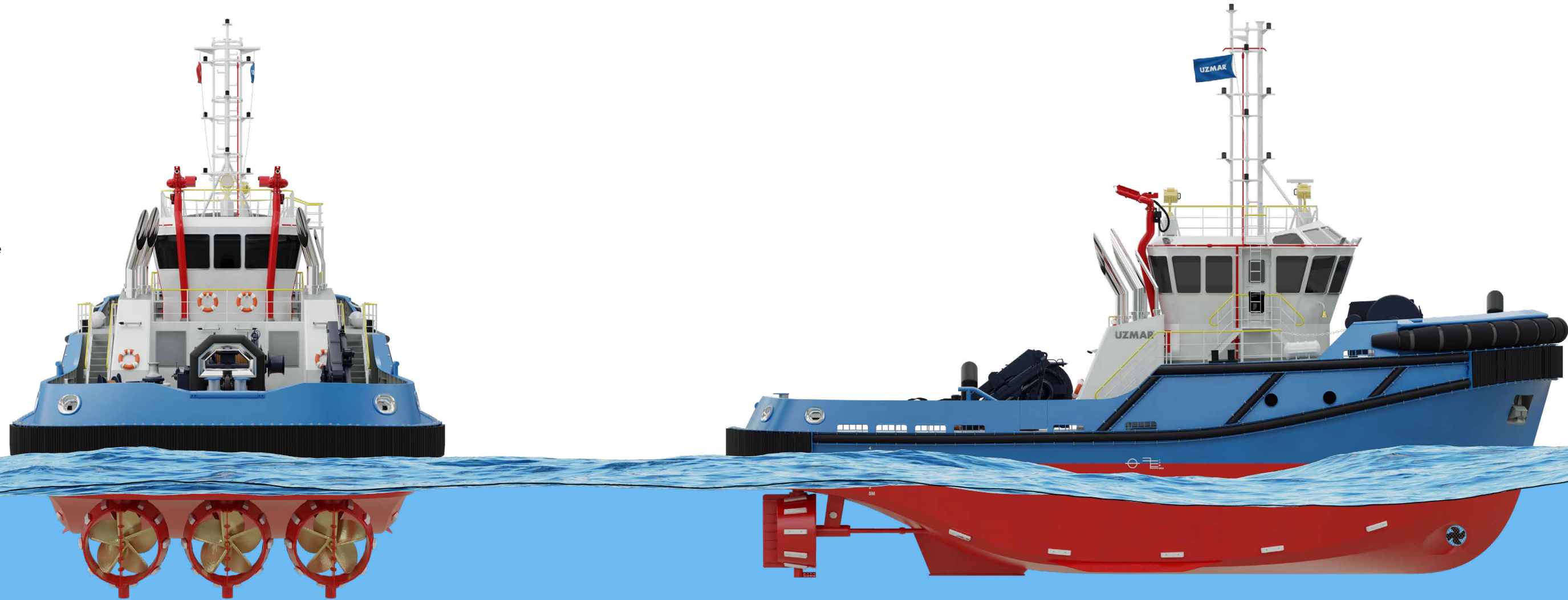
# TWIN SCREW TUGBOATS

DRAfter 2500/UZM

LOA	: 25.10 m
BEAM	: 11.00 m
GROSS TONNAGE	: < 500 GT
DRAUGHT, MAX	: 3.30 m
[depends on propeller dia]	
MAX.SPEED	: 12.00 knots
BP, MAX	: 60.00 ton
MAIN ENGINES	: High speed engines up to 1200 bkW
PROPULSION	: Up to 3 x Conventional fixed pitch propeller with nozzle
GENERATOR	: Min. 2 x 88 ekW (based on load analysis)
FIRE FIGHTING	: FiFi 1 / dedicated diesel or main engine driven pumps.
ACCOMMODATION	: Up to 5 person
FUEL CAPACITY (M³)	: 88
FRESH WATER CAPACITY (M³)	: 15
GMDSS	: A1-A2-A3

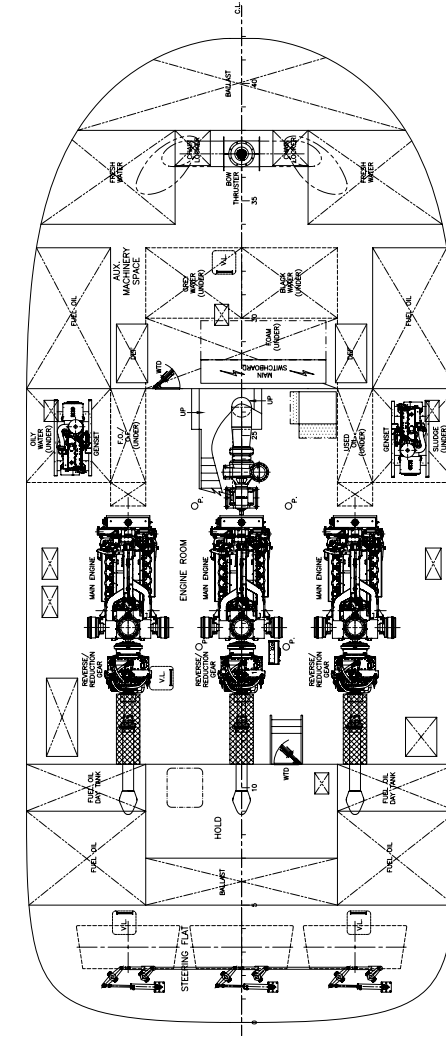
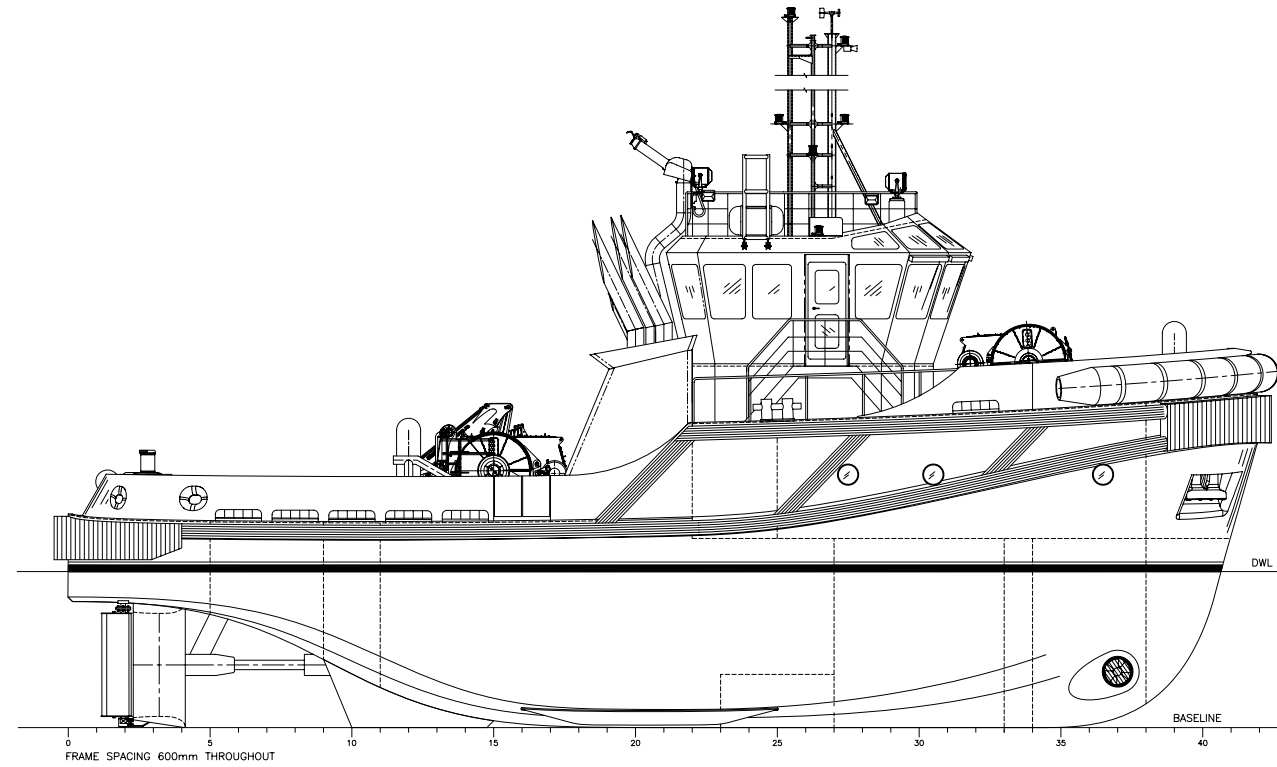
## Features:

- Shallow draft.
- Multi-function in coastal and protected environments.
- Typically conventional twin-screw tugs, but also available in triple screw configurations.
- Capable of performing ship handling when fitted with forward winch.
- Equipped with heavy duty aft towing gear and deck cranes.
- Suitable for towing, anchor handling, and maintaining nearshore infrastructure.



**ROBERT ALLAN**  
Naval Architects & Marine Engineers

## DRAfter 2500/UZM









# UZMAR®

## UZMAR GEMİ İNŞA SAN. VE TİC. A.Ş.

Kocaeli Serbest Bölgesi Sepetlipınar SB Mah.  
102. Cad. No:14-16 41090 Başiskele, Kocaeli, TURKEY  
Phone : +90 (262) 341 45 10 (pbx)  
Fax : +90 (262) 341 45 12  
E-Mail : info@uzmar.net  
Web : www.uzmar.com

## İSTANBUL OFFICE

Caddebostan Mah. Operatör Cemil Topuzlu Cad.  
Kutmen Apt. No:60/2 D:7 Kadıköy İstanbul, TURKEY  
Phone : +90 (216) 405 21 01 (pbx)  
Fax : +90 (216) 405 21 04  
E-Mail : sales@uzmar.net  
Web : www.uzmar.com